

A2W SIZE: 1/2"~2"



## HIGH PRESSURE

STAINLESS STEEL AISI 316 (Din 1.4408)  
 CARBON STEEL S45C (Din 1.0619)

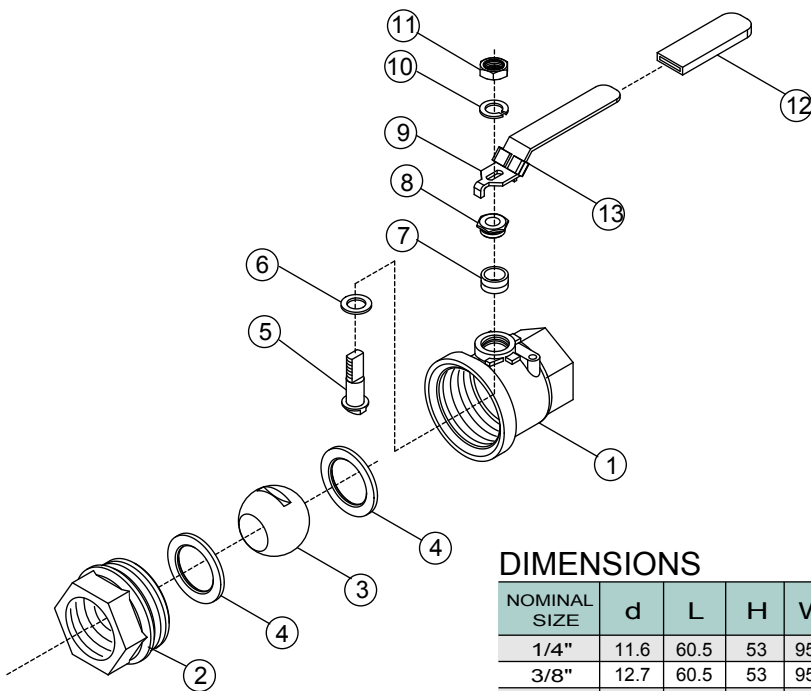
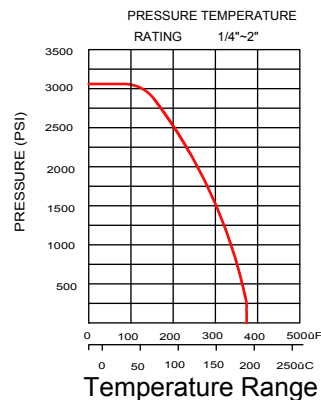
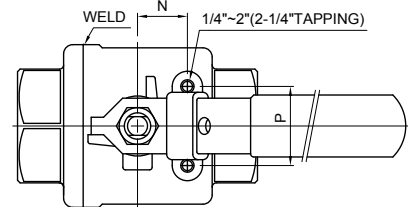
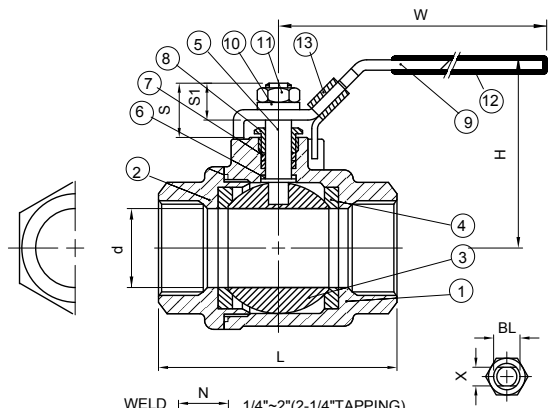
### Features :

- \*Pipe thread in accordance with ANSI B2.1, BS21 1973, DIN259/2999, ISO 228
- \*Blow-out proof stem
- \* 3000 PSI (W.O.G.)
- \*Lug body
- \*With Mounting Pad
- \*Material: ASTM-A351-CF8M, ASTM-A351-CF8 & ASTM-A216-WCB

**\*OPTION: Locking device  
 Drilling and Tapped Mounting Pad**

## MATERIALS LIST

ITEM	PARTS	Q'TY	MATERIALS	
			A2W	A2W-C
1	BODY	1	ASTM-A351-CF8M	ASTM-A216-WCB
2	CAP	1	ASTM-A351-CF8M	ASTM-A216-WCB
3	BALL	1	ASTM-A351-CF8M	ASTM-A351-CF8M
4	BALL SEAT	2	15% R-PTFE	15% R-PTFE
5	STEM	1	AISI 316	AISI 316
6	THRUST WASHER	1	PTFE	PTFE
7	STEM PACKING	2	PTFE	PTFE
8	GLAND NUT	1	AISI 304	AISI 304
9	HANDLE	1	AISI 304	AISI 304
10	STEM WASHER	1	AISI 304	AISI 304
11	STEM NUT	1	AISI 304	AISI 304
12	PLASTIC COVER	1	PLASTIC	PLASTIC
13	LOCK DEVICE	1	AISI 304	AISI 304



## DIMENSIONS

NOMINAL SIZE	d	L	H	W	S	S1	X	N	P	BL	Cv FACTOR	TORQUE kgf-cm
1/4"	11.6	60.5	53	95	16.5	10.2	5	12.5	28.5	5/16"	6.6	46
3/8"	12.7	60.5	53	95	16.5	10.2	5	12.5	28.5	5/16"	7.9	46
1/2"	15	62.5	53	95	16.5	10.2	5	12.5	28.5	5/16"	11.2	54
3/4"	20	77	60	110	20	13.5	6.5	21	34.8	3/8"	21	78
1"	25.4	90	74	135	23.5	16	8	22.5	34.8	7/16"	35	106
1-1/4"	32	100	80	135	23.5	16	8	23.5	38.1	7/16"	57	150
1-1/2"	38	118	92	165	25.5	17	9	23.5	38.1	1/2"	80	200
2"	50.8	138	101	165	25.5	17	9	34	38.1	1/2"	150	280

UNIT:mm